

**Craft Brass Three**

**LIFE**

**TRIVIA**

# LIFE TRIVIA





**Arts & Culture**  
**Fresh Geography**  
**Health Matters**  
**Legal Concerns**  
**Facts of Life**  
**Food & Drink**

A teal-colored oval with a thin black border, centered on a light gray background. The text "Round Five" is written in white, bold, sans-serif font inside the oval.

**Round**

**Five**

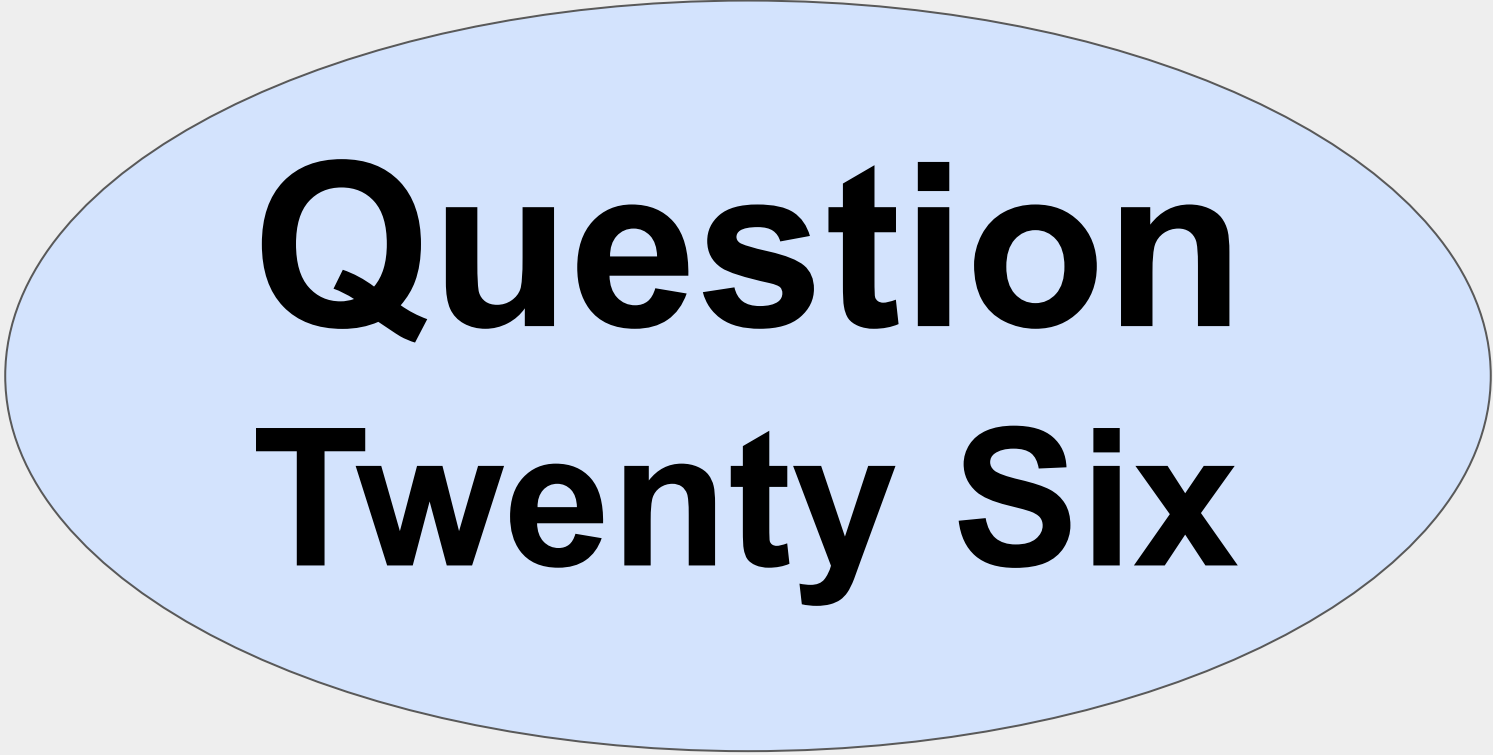


**Question**

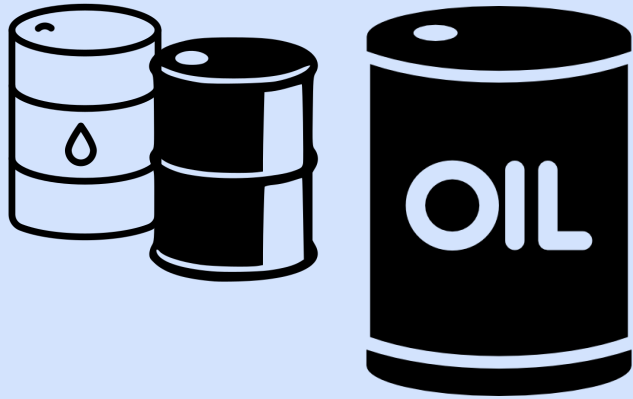
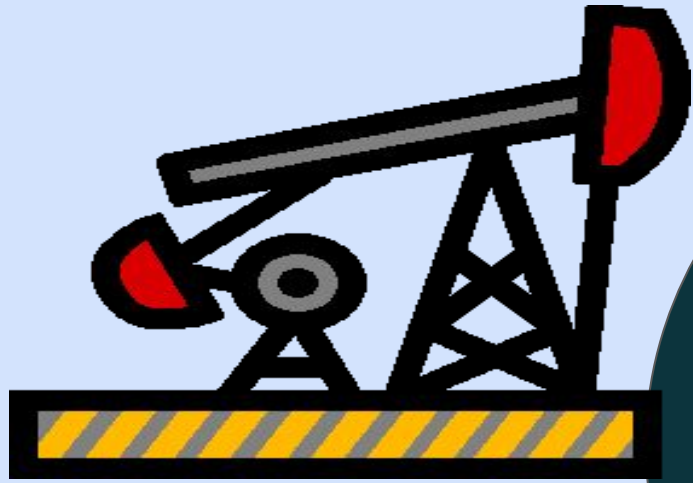
**Twenty Five**



**What four words  
do you have to  
speak aloud  
when giving the  
Vulcan salute?**



**Question  
Twenty Six**



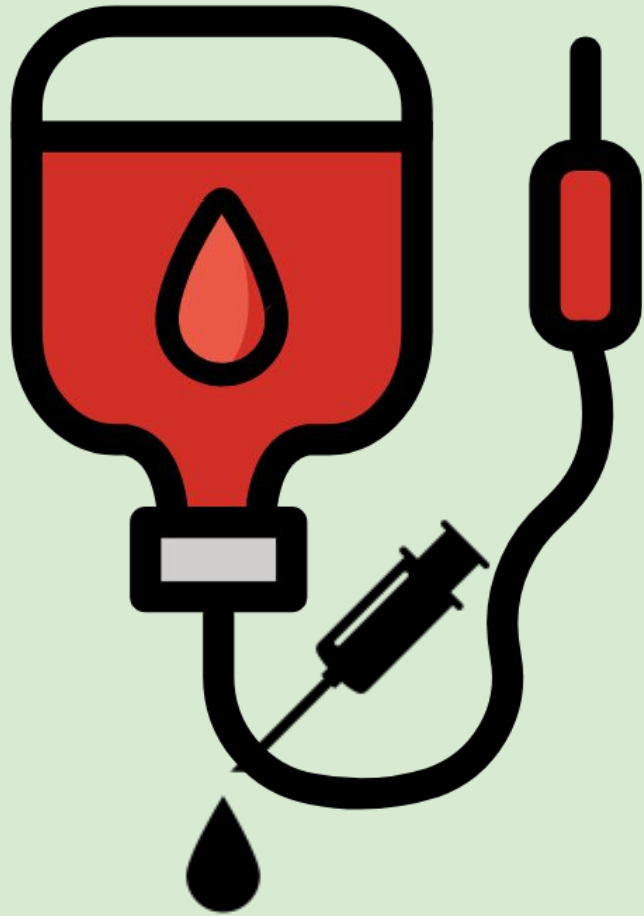
**Which country  
is the world's  
biggest oil  
producer?**





**Question**

**Twenty seven**



Which  
blood type is  
considered  
the *universal  
donor*?

**Question**

**Twenty Eight**



**Drivers who blow a warning ( $>0.5 < 0.8$ ) in a Field Sobriety Test, for the first time, will pay a \$250 fine and have their driver's license revoked for how long?**

A large, light pink oval with a thin black border, centered on a white background. Inside the oval, the text "Question Twenty Nine" is written in a bold, black, sans-serif font.

**Question**

**Twenty Nine**



**What  
does this  
symbol  
mean?**

An orange oval with a thin black border, centered on a white background. Inside the oval, the text "Question Thirty" is written in a bold, black, sans-serif font, with "Question" on the top line and "Thirty" on the bottom line.

**Question  
Thirty**

**m&m's<sup>®</sup>**

**How many colors will you find  
in a regular bag of M&Ms?**



A teal-colored oval with a thin black border, centered on a light gray background. The text "Round Six" is written in white, bold, sans-serif font inside the oval.

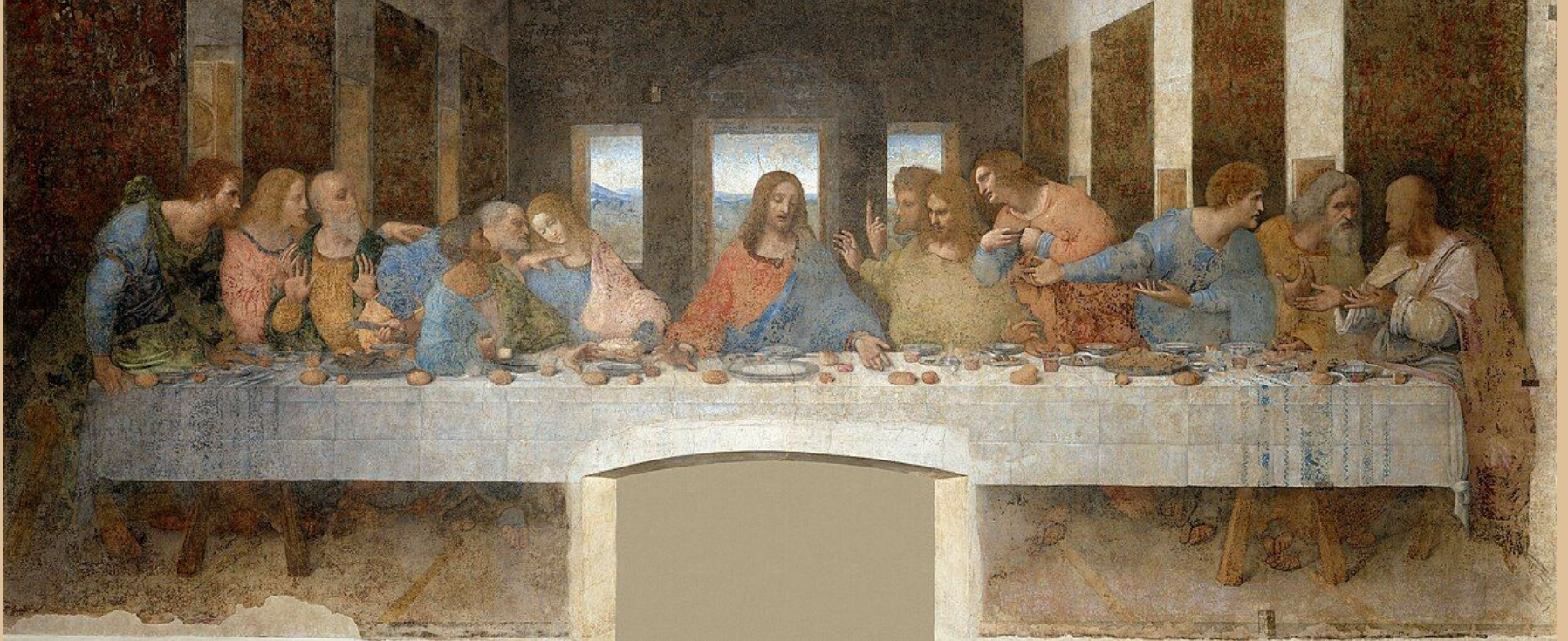
**Round**

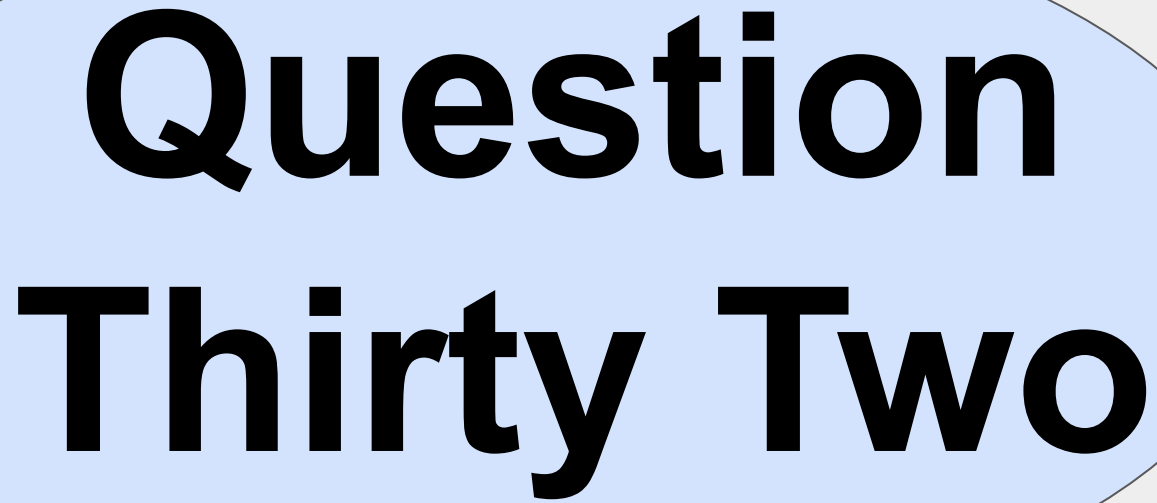
**Six**



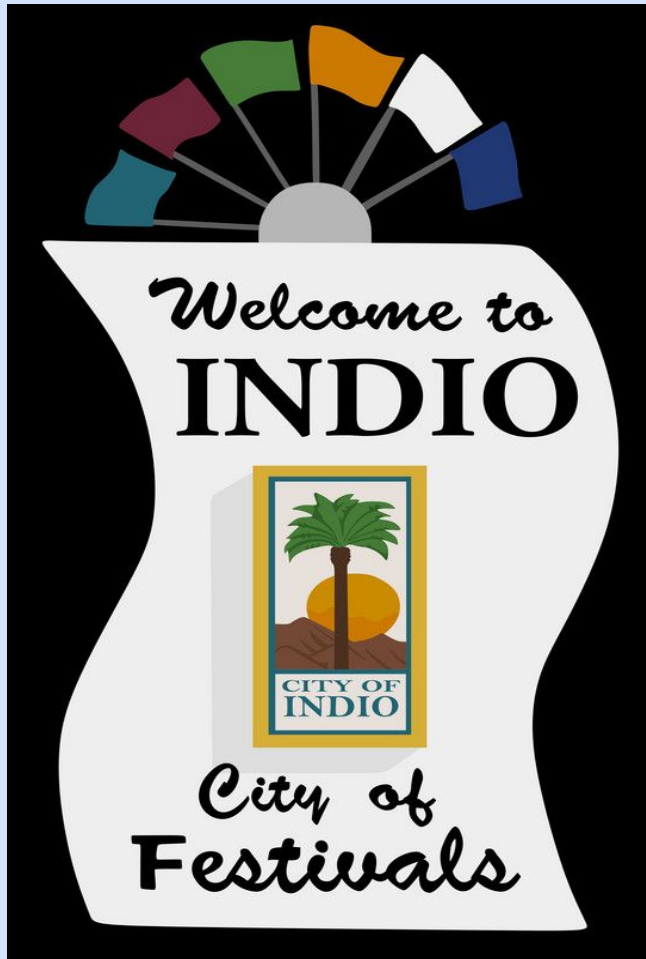
**Question  
Thirty One**

**What is the title of this mural, and who painted it?**





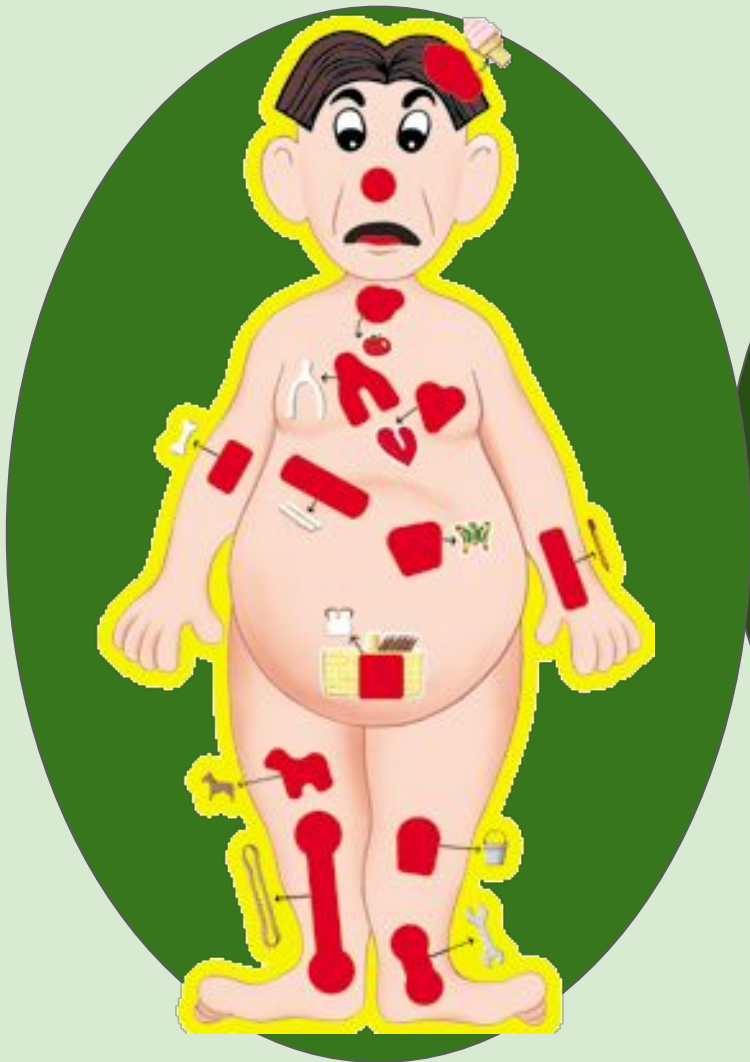
**Question  
Thirty Two**



**Which famous  
music festival  
happens every  
April in Indio,  
California?**



**Question  
Thirty Three**



**Where would  
surgeons find  
the smallest  
bone in the  
human body?**

A yellow oval with a thin black border, centered on a white background. Inside the oval, the text "Question Thirty Four" is written in a bold, black, sans-serif font, arranged in two lines.

**Question  
Thirty Four**



**How  
do people  
measure  
and sell  
firewood?**



**Question**

**Thirty Five**

**Which  
Ronald  
McDonaldland  
character is  
an  
oversized  
pear-shaped  
purple  
blob?**



An orange oval with a thin black border, centered on a white background. Inside the oval, the text "Question Thirty Six" is written in a bold, black, sans-serif font, arranged in two lines.

**Question  
Thirty Six**

Which  
medicinal  
herb which  
gives us  
absinth?



**End of  
LIFE  
TRIVIA**



**Answers**

A teal-colored oval with a thin black border, centered on a light gray background. The text "Round Five" is written in white, bold, sans-serif font inside the oval.

**Round**

**Five**





**Question**

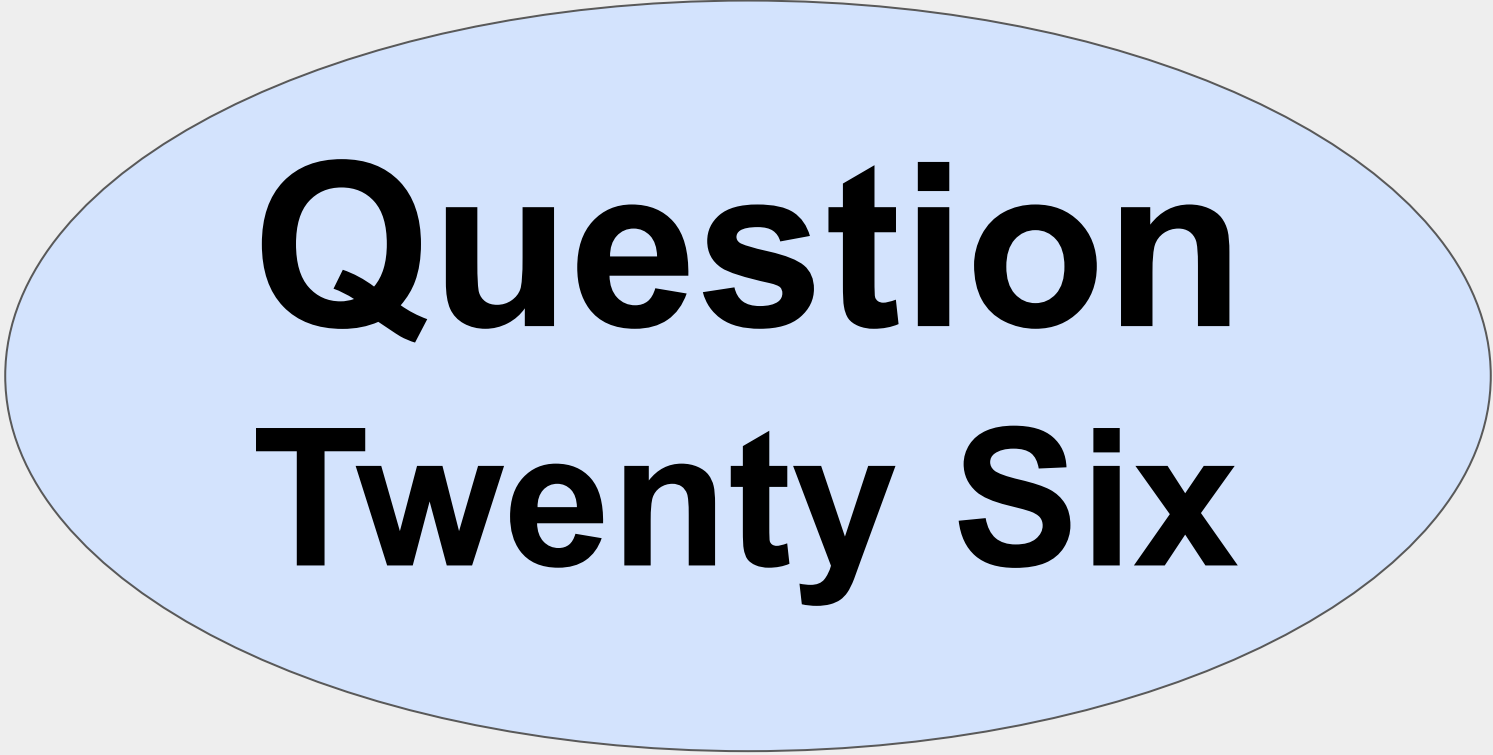
**Twenty Five**



**What four words  
do you have to  
speak aloud  
when giving the  
Vulcan salute?**

**Live  
Long  
and  
Prosper**



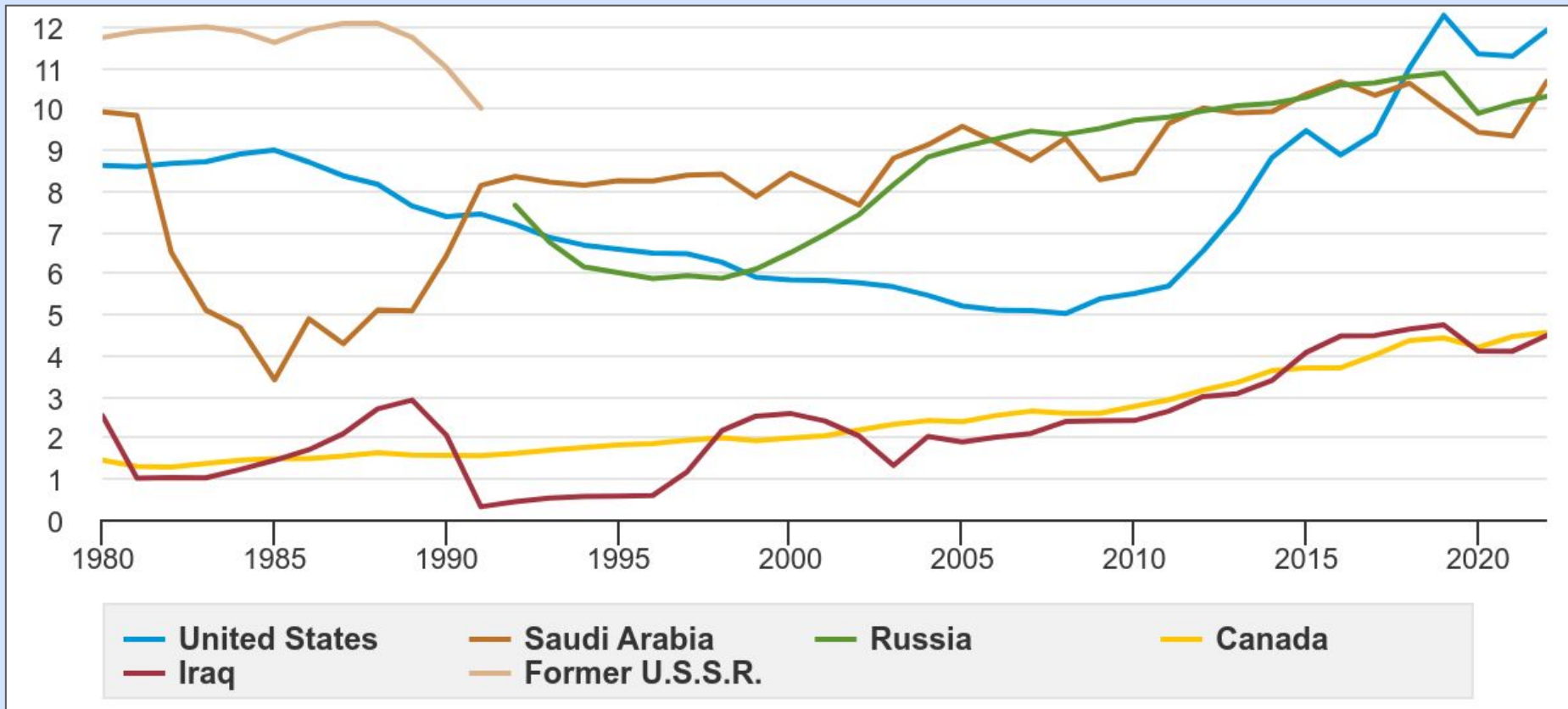


**Question  
Twenty Six**



**Which  
country is the  
world's  
biggest oil  
producer?**

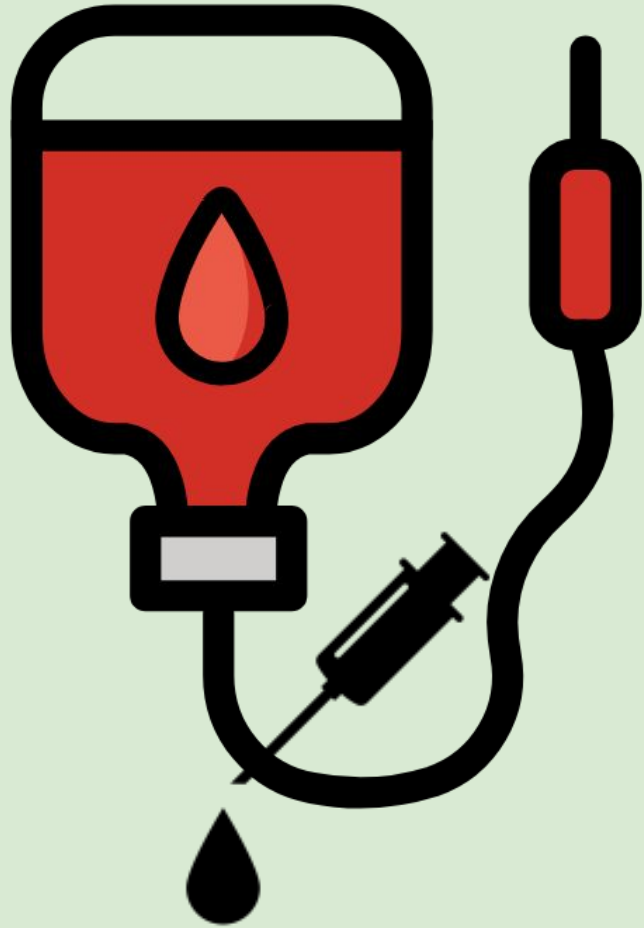
# United States is the world's biggest oil producer since 2018.





**Question**

**Twenty seven**

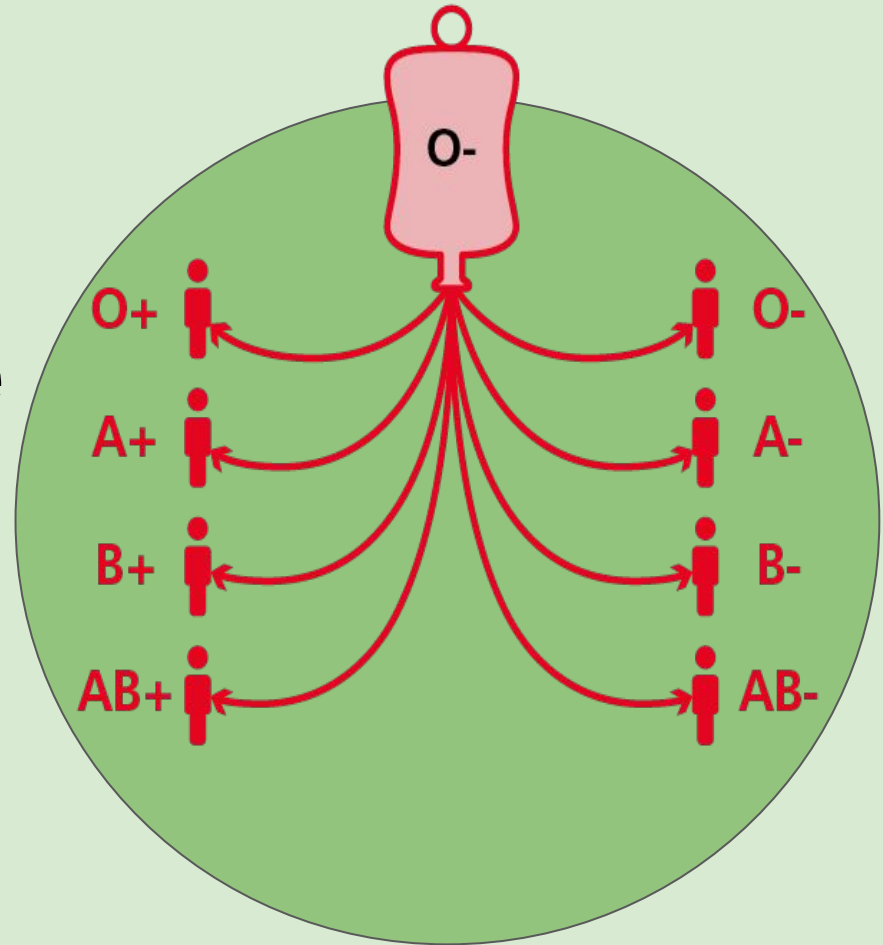


Which  
blood type is  
considered  
the *universal*  
*donor*?



# O- blood

is considered  
universal because  
it can be received  
by anyone with  
any blood type.



**Question**

**Twenty Eight**



**Drivers who blow a warning ( $>0.5 <0.8$ ) in a Field Sobriety Test, for the first time, will pay a \$250 fine and have their driver's license revoked for how long?**



## **3-Day Suspension**

**Drivers with a Blood Alcohol Concentration between 0.05 and 0.079 BAC will fail the Standard Field Sobriety Test and receive 3-day licence suspension plus \$250 fine. Second time offenders receive a seven day license suspension plus a \$350 fine.**



**Question**

**Twenty Nine**



**What  
does this  
symbol  
mean?**

# Hand Wash

Whenever you see a hand in a bucket of water, it means the clothing item should be hand washed only. This symbol is found on delicate garments which need special attention.



An orange oval with a thin black border, centered on a white background. Inside the oval, the text "Question Thirty" is written in a bold, black, sans-serif font. The word "Question" is on the top line and "Thirty" is on the bottom line, both centered horizontally.

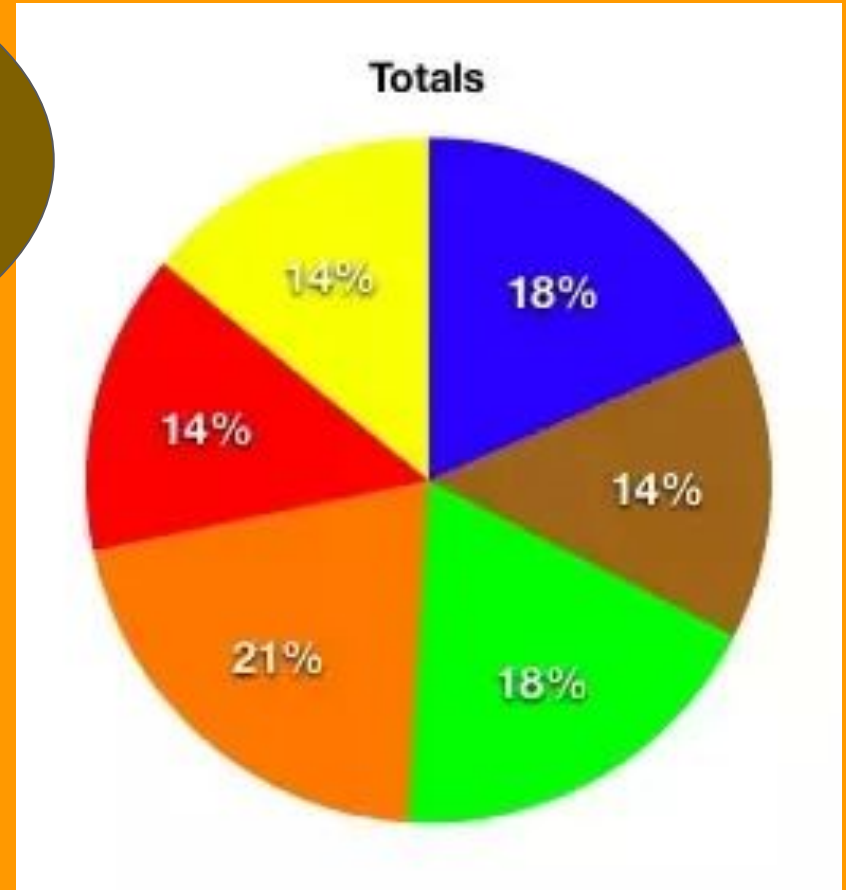
**Question  
Thirty**



**m&m's<sup>®</sup>**

**How many colors will you find  
in a regular bag of M&Ms?**

There are  
six colours in a  
regular package  
of M&M's.



A teal-colored oval with a thin black border, centered on a light gray background. The text "Round Six" is written in white, bold, sans-serif font inside the oval.

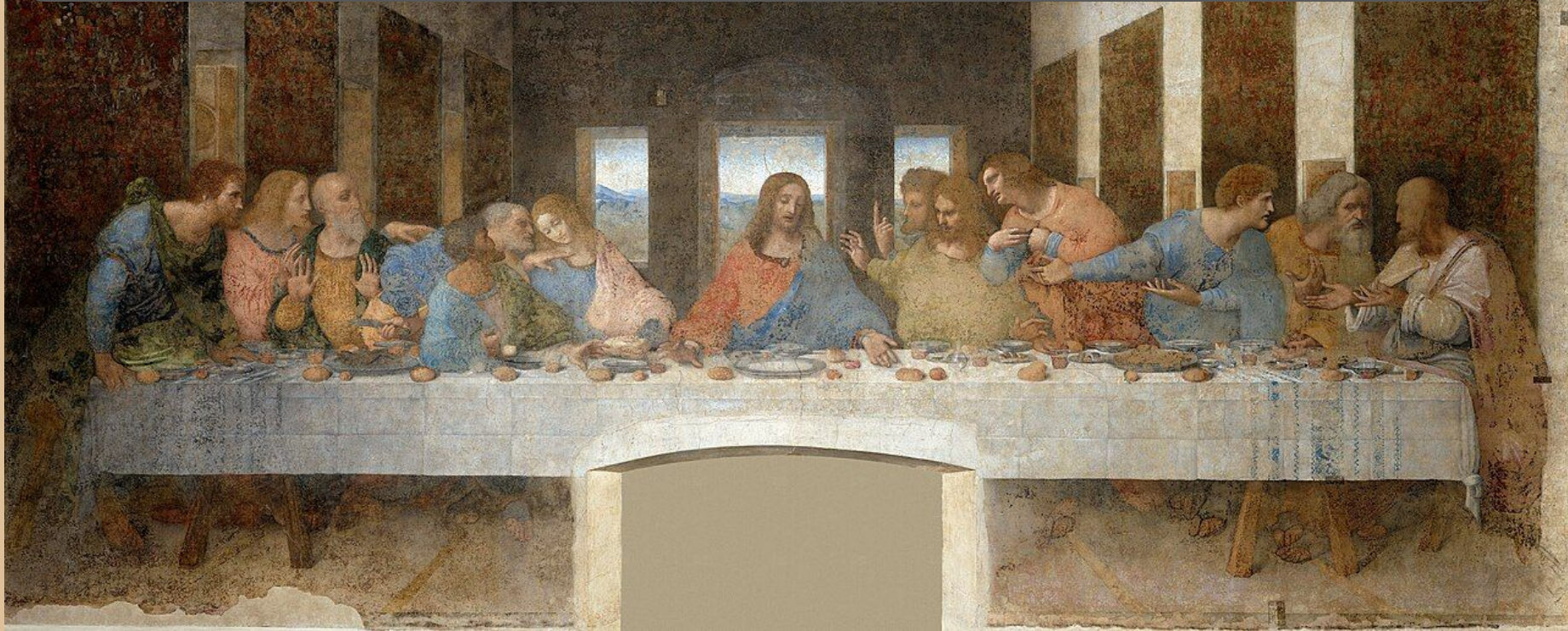
**Round**

**Six**



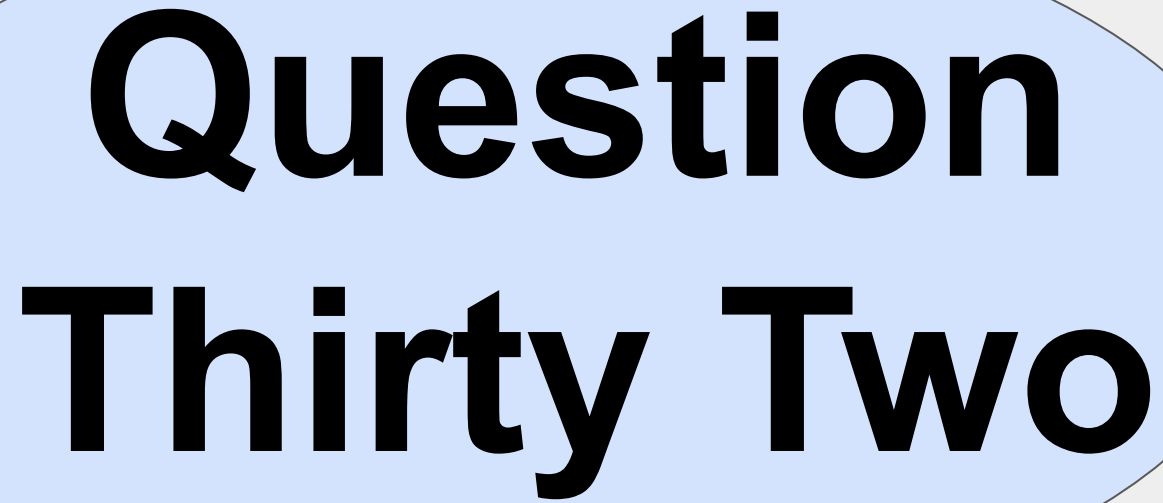
**Question  
Thirty One**

**What is the title of this mural, and who painted it?**



***The Last Supper* is a wall mural painted by Leonardo Da Vinci.**





**Question  
Thirty Two**



**Which famous  
music festival  
happens every  
April in Indio,  
California?**

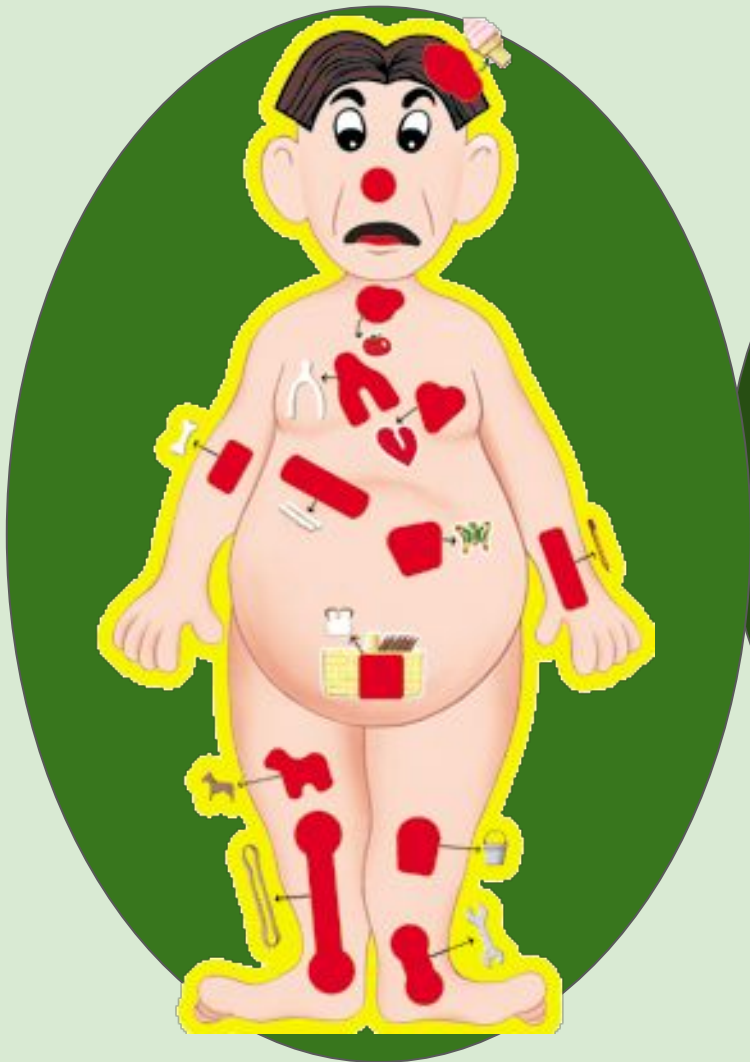


# Coachella





**Question  
Thirty Three**



**Where would  
surgeons find  
the smallest  
bone in the  
human body?**



**Your ear  
has the  
smallest  
bone in  
your body.**

A yellow oval with a thin black border, centered on a white background. Inside the oval, the text "Question Thirty Four" is written in a bold, black, sans-serif font, arranged in two lines.

**Question  
Thirty Four**

**How  
do people  
measure  
and sell  
firewood?**





**Cords**  
firewood  
is sold in units  
called cords,  
equal to 128  
cubic feet.

**Question**

**Thirty Five**



**Which  
Ronald  
McDonaldland  
character is  
an  
oversized  
pear-shaped  
purple  
blob?**





# Grimace

In 1971, a large purple monster was introduced as "Evil Grimace". In his first three appearances, he was depicted with two pairs of arms which were used to steal milkshakes and Cokes. "Evil" was dropped from Grimace's name when he was reintroduced in 1972 as Ronald's slow and shy friend, with only one set of arms.

An orange oval with a thin black border, centered on a white background. Inside the oval, the text "Question Thirty Six" is written in a bold, black, sans-serif font, arranged in two lines.

**Question  
Thirty Six**

Which medicinal herb which gives us absinth?



# Wormwood

*(Artemisia absinthium)* is the herb used to make the alcoholic drinks vermouth and absinthe. Its oil contains the chemical *thujone*, which may be poisonous.



A teal-colored oval with a thin black border, centered on a light gray background. The text "Thanks for Playing" is written in white, bold, sans-serif font inside the oval.

**Thanks for  
Playing**